

CHRISTIAN CHALLENGE
CHRISTIAN CHALLENGE
CHRISTIAN CHALLENGE
CHRISTIAN CHALLENGE
CHRISTIAN CHALLENGE



Webster Conference Center
September 27-29
October 4-6

FALL CONFERENCE
FALL CONFERENCE
FALL CONFERENCE
FALL CONFERENCE
FALL CONFERENCE

SCHEDULE

Friday

- 4:30PM Registration Begins - *Multi-Purpose Lobby*
- 7:15PM Collegiate Staff Meeting - *Multi-Purpose Commons*
- 8:00PM Main Session #1 - *Main Chapel*
- 9:45PM Campus Group Time - *See Conference Booklet*

Saturday

- 7:00AM Breakfast and Time Alone with God
 - 7:00AM: KSU
 - 7:20AM: All Other Campuses
- 8:00AM Collegiate Staff Meeting - *Multi-Purpose Commons*
- 9:00AM Morning Worship & Announcements - *Main Chapel*
- 9:45AM Breakout Session #1 - *See Conference Booklet*
- 11:10AM Breakout Session #2 - *See Conference Booklet*
- 12:30PM Lunch - *Outdoor Pavilion*
 - 12:30 pm: All Other Campuses
 - 12:50 pm: KSU
- 1:45PM Opportunities Fair - *See Conference Booklet*
- 2:30PM Free Time - *See Conference Booklet*
- 5:00PM Dinner - *Oak Hollow*
 - 5:00 pm: KSU
 - 5:20 pm: All Other Campuses
- 7:00PM Main Session #2 - *Main Chapel*
- 9:00PM Campus Group Time - *See Conference Booklet*
- 10:00PM Ice Cream - *Outside Multi-Purpose Building*
- 10:15PM Dance - *Multi-Purpose Gym*

Sunday

- 7:00AM Breakfast and Time Alone with God
 - 7:00 am: All Other Campuses
 - 7:20 am: KSU
- 9:15AM Pack & Clean
- 10:00AM Main Session #3 - *Main Chapel*
- 11:30AM Conference Ends



NEED TO KNOW

Challenge Course equipment is for use only with approved facilitators.

Medical supplies are in the Office in the Main Chapel. If you need to see the nurse, contact your campus ministry staff.

The lakes are open for catch & release fishing. Swimming is not permitted.

Tent campers using dorm sleeping rooms for dressing, showering, or using the bathroom: please don't leave anything in them.

Porta Potties will be available outside of Oak Hollow. Women use west porta potties and men use east.

Please limit noise around sleeping rooms. after 11PM.

Camp Ground Rules

Move all vehicles from the campsite area after unloading. This area is reserved for camp staff. Don't drive in the woods.

Keep campfires in designated fire rings.

Do not leave campfires unattended. There are buckets for water by each fire ring.

Place tents at a safe distance from the fire rings (minimum of 10 feet)

Treat fellow campers with courtesy, respect, and honor.

Limit the noise levels late at night.

Keep food in sealed containers so as not to attract unwanted visitors (a.k.a. mice, raccoons, possums, and dragons)

Bathroom facilities on the ground level and second floor of the cafeteria building (a.k.a. Oak Hollow) are designated for campground campers.

Access second floor bathroom facilities from outside stairs at the ends of the building. Access ground bathrooms from rear door.

Porta potties will be available. Women's on west, men's on east.

Stay out of tents being used by campers of the opposite gender.

Use good judgement in securing hammocks. Keep a safe distance from the ground. Check the integrity of your hammock cords. Don't overload the hammock
Maximum of 3 hammocks stacked at a time.

BREAKOUTS

Our Sexual Brokenness and God's Path to Hope and Healing (Men Only) Conference Chapel Room J (Third Floor)

- Brooke Beyer

God can and will use our stories of sexual brokenness to draw us closer to Him and to reveal our deep need to be loved and known by Him. Come join us as we discuss God's intent for sex and his path to hope and healing from our sexual brokenness.

Abiding in God's Design for our Sexuality (Women Only, 1st Session Only) MP 123 - Ashley Chesnut

Abiding in God involves living according to His design. What is His design for our sexuality and gender? How do we know His design is good? Join us as we answer these questions and see the hope God offers us as we struggle with temptations, desires, guilt, and shame related to sexuality.

Abiding in God's Grace and Truth as We Respond to Disclosures (2nd Session Only) MP 123 - Ashley Chesnut

Do you know how to respond well when someone makes a disclosure to you about their sin, trauma, or sexuality? What if what they disclose goes against what the Bible teaches? In this session, we'll answer these questions as we look at what LGBTQ+ people commonly experience before coming out, and we'll consider how to love people well as we express both God's grace and His truth to them.

How to Live in the Victory of Christ When Your Mental Health Feels Out of Control MP 121 - Terry Williams

Our thoughts shape the very course of our lives. Did you know that you get to choose the thoughts that you allow to stay in your mind and shape your life? Your thinking need never be "out of control." You can train your mind to abide in Christ so that your thoughts are captive to Him, rather than you becoming captive to them.

Abiding in the Gospel MP204

Do you find it difficult to start a conversation about the Gospel? The Gospel is at the center of God's Grand Story, and we need to preach it to ourselves as well as to those who are lost. Learn how to use a visual tool that is not only a conversation starter but also a road map to follow. This tool will help you share God's Grand Story, including His Gospel, faithfully and completely.

Deep Discipleship: Aiming at Soul-Deep Transformation

MP Chapel (Upstairs) - John Shields

Jesus' call to discipleship is meant to change us from the inside out. Too often we start with behavior, resulting in a frustrating spiritual rut. Revisit the biblical core of soul deep transformation that endures.

Available, Attentive, Equipped: Evangelism Panel

Conference Chapel Room C (Second Floor) - Collegiate Staff Panel

Jesus commands his followers to go and make disciples. Evangelism isn't for the 'spiritual elite' (we certainly aren't!), it is for all followers of Jesus. Hear from this panel about joining God in His work of life transformation and be equipped and sent on your campus.

Living Out Your God-Given Purpose in the Workplace

MP 118 - Ryan Nutter

If you work 40 hours per week for the next 40 years of your life, you'll have spent 80,000 hours working in your vocation. During your working years--the companies you build, the employees you work with, the customers you serve, the shareholders you report to--all of this serves as an active part of what God wants to accomplish on earth. We need to understand how our work ties in with God's calling and purpose for the world...So let's talk about it!

Abiding in the Word: How to Have a Quiet Time That Stirs Your Love For God MP Commons - Brooklyn Griffin

God is inviting you to know him deeper through spending time in His Word. How exactly do we meet God in the Word every day? Reading the bible doesn't have to always feel like a duty, it is designed to be something we delight in. Join us as we talk practically about how to read the bible and love it!

Abiding Through Suffering MP 116 - Carin Cochran

God's invitation is for us to come to Him and abide in Him. But even in the midst of that abiding we will experience suffering. Let's take a look at what the Bible has to say about living in Christ and in suffering at the same time.

Free Time Options

Outdoor basketball, volleyball, ultimate frisbee, and soccer games will be taking place. Please consider others who would like to play and try to rotate teams.

The Multi-Purpose Commons is open for table games and conversation.

There is a 9-hole disc golf course. It is a heavily wooded course, so dress accordingly.

The lakes are open for catch & release fishing and paddle boating. Use of paddle boards is not permitted. Life jackets are required for those using canoes and paddle boats. Please no swimming.

The small zip line will be open from 2:30-5PM. No sign up is necessary. If you'd like to do the zip line, head out to the zip line platform by the lake.

OPPORTUNITIES FAIR

Groups that will have table/information:

SEND Network


IMB

Midwestern Seminary

SuperSummer Collegiate Staff

OneLink International 

FUGE Camps

 One Link International will have a informational meeting at 1:45PM in MP121. If you are interested in learning more about any of the other opportunities, stop by the MP Lobby.

Campus Breakout Locations

Chapel Room C _____ Pratt CC

Chapel Room D _____ Grace Baptist

Chapel Room D _____ Colby CC

Main Chapel _____ KSU

MP 116 _____ Bethany

MP 121 _____ Salina Campuses

MP Commons Area _____ KU

MP Small Chapel _____ Hutch CC



High Ropes Challenge Course

Low Ropes Challenge Course

Obstacle Course

Target Range

Basketball Court

Amphitheater

Mulberry Creek

Bridge

Basketball & Volleyball Courts

Oak Hollow & Main Lodge

Snack Shack

Horseshoe Pits

Gaga Ball

Rec Shack

Picnic Pavilion

Dormitory Building

Motel & Staff House

Shop

Swimming Pool

Prayer Gazebo

Chapel Building

Multi-Purpose Building & Gymnasium

Main Parking

Bus Parking

Pedestrian Walkway

Parking

Parking

Climbing Tower Ready to Fly Zip Line

Dock

Swim Area

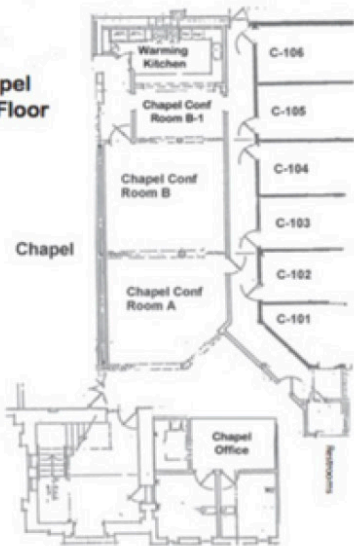
Paddle Boats & Canoes

Lake

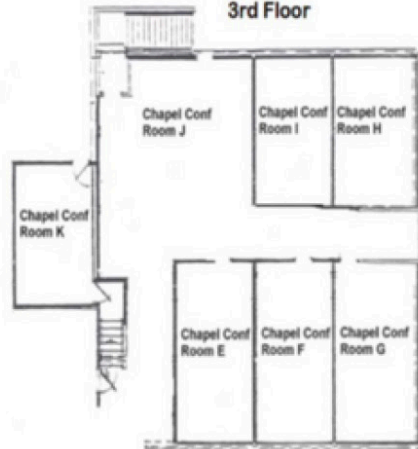
Lake

Disc Golf Course

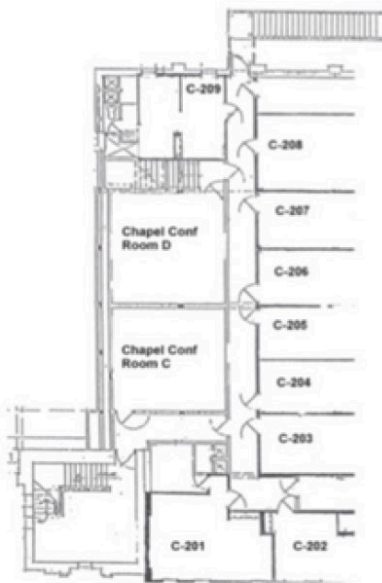
**Chapel
1st Floor**



**Chapel
3rd Floor**



Chapel 2nd Floor



**1st floor
Multi-Purpose Building**



**2nd floor
Multi-Purpose Building**

